

Specification and scope of supply of P43.100

Description	Specification/scope of supply
Max component length	810mm
Max component width	520mm
Max component thickness	235mm
Max component weight	25kg – UDL (Uniformly Distributed Load)
Measuring accuracy, length & width**	+/- 100/200µm
Measuring accuracy, height** (optional with Surfscan)	+/- 300 µm
Point Spacing	0.26mm
Measuring speed**	<0.25sec
Camera	Industrialized ultra high resolution
Screen	24 inch flat screen monitor
Peripheral equipment	Keyboard and optical mouse
PC Operating software	Windows 11
Proprietary InspecVision software	2D & 3D Inspection, SPC, Reporting, Reverse engineering
Data cable	USB2 or USB3
KVM	Keyboard, Video Display & Mouse stand (PC integrated into light table assembly)
Light table construction	Frame with removable sheet metal cladding
Light source	LED Strip
Power supply	230 Volt, 50Hz or 110 Volt, 60Hz on request, single phase,(Grounded mains plug to IEC C13 Lead supplied)
Power consumption	5 Amp maximum at 230 Volt, 10 Amp max at 110 Volt
Control panel	Control switches for computer and projector power and USB port
EC directives	Compliant with Machinery, Low voltage and EMC Directives
Paint colour (powder paint)	RAL5013 (cobalt blue)
Ambient operating conditions	10-30 degree C
Approx Footprint/installed width/ depth/ height/ weight of installed System	1029mm (W) x 1123mm (D) x 2200mm (H) approx weight 250kgs
Approx Footprint/installed width/ depth/ height/weight including optional stand)	1029mm (W) x 1123mm (D) x 2738mm (H) approx weight 300kgs
Warranty	One year limited warranty on hardware and software
Optional extended warranty	Two or three year extended warranty (requires software upgrade option)
Software support option	Annual support contract provides free software upgrades
Installation	Plug & Play

*The first accuracy value specifies the accuracy achieved over most of the table, the second accuracy value specifies the accuracy achieved at table edges

**Accuracy results are verified on standard production machines using tests based on ISO 10360

Actual measuring accuracies achieved will depend on operating environment, user input, quality and condition of materials

Errors and omissions excepted

Due to our policy of continuous improvement specifications are subject to change without notice, please contact factory or your InspecVision dealer

Non-standard hardware, software or acceptance tests must be defined prior to purchase



Manufacturer:

InspecVision Ltd

10 Trench Road

Mallusk

Newtownabbey BT36 4TY

Co Antrim United Kingdom

Telephone: +44 (0) 28 90 844 012

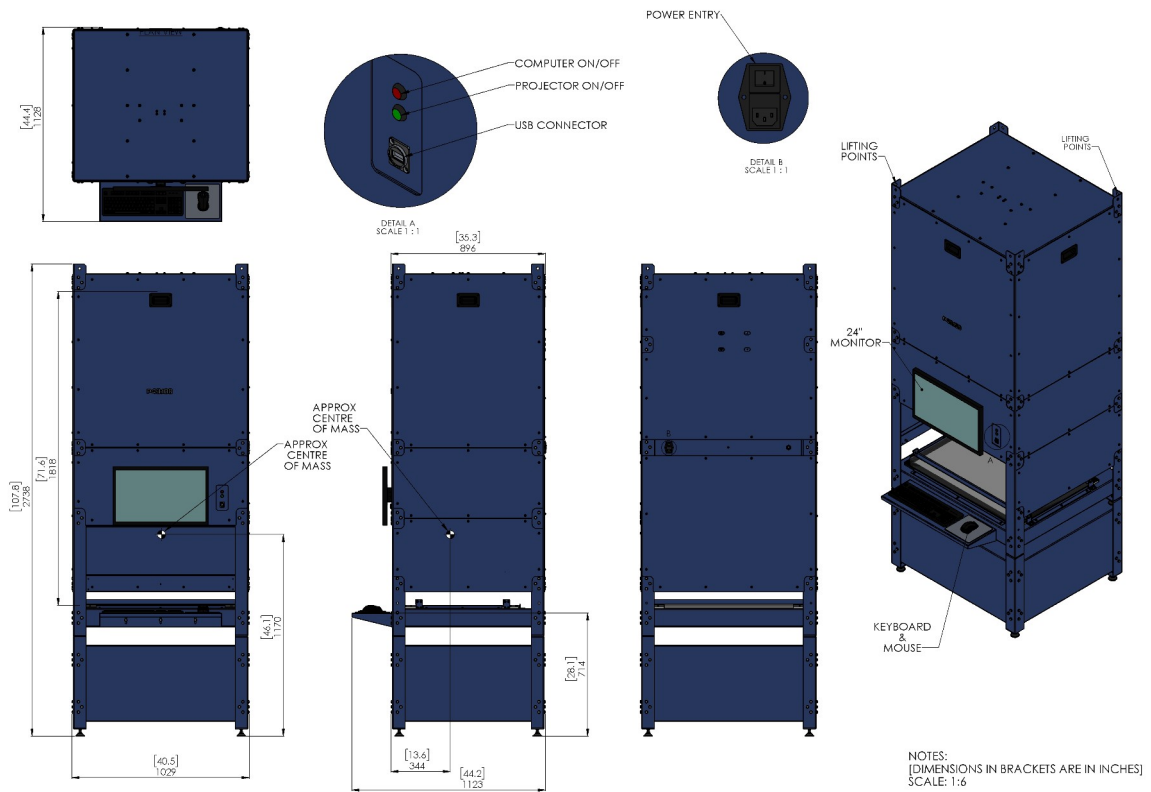
Telefax: +44 (0) 870 706 1614

Email: Info@InspecVision.com

Web Address: www.InspecVision.com

Distributor Details:

P43.100 Schematic With Optional Stand



P43.100 Schematic Without Stand

